

Kelin epoxy tile joints adhesive is a new upgraded product after colorful waterborne epoxy tile grout, it not only retains the texture of colorful waterborne epoxy tile grout, upgrades the product performance, but also makes construction easier and more convenient. Soft texture, greatly shows your low-key luxury decorative style. Varieties of colors, make your decoration place sparkling. Eco-friendly epoxy resin subbase course let your product more waterproof, wear-resistant, mould proof and moisture proof. Natural sand calcined at high temperature makes the color more natural and beautiful and never fades. Also, it is as bright as porcelain after cluing without yellowing or decolorizing. In addition, the joint surface looks perfect fit to the ceramic tile, just like nature itself.

The product of [China epoxy brick adhesive supplier](#) can be better used in the joints of ceramic tile, stone, glass, mosaic tile on the wall or floor in bathroom, kitchen, bedroom and so on. Australia joint research and development products to make the better performance, and through the Chinese Academy of Sciences strategic quality control guidance, to make products' quality stable.

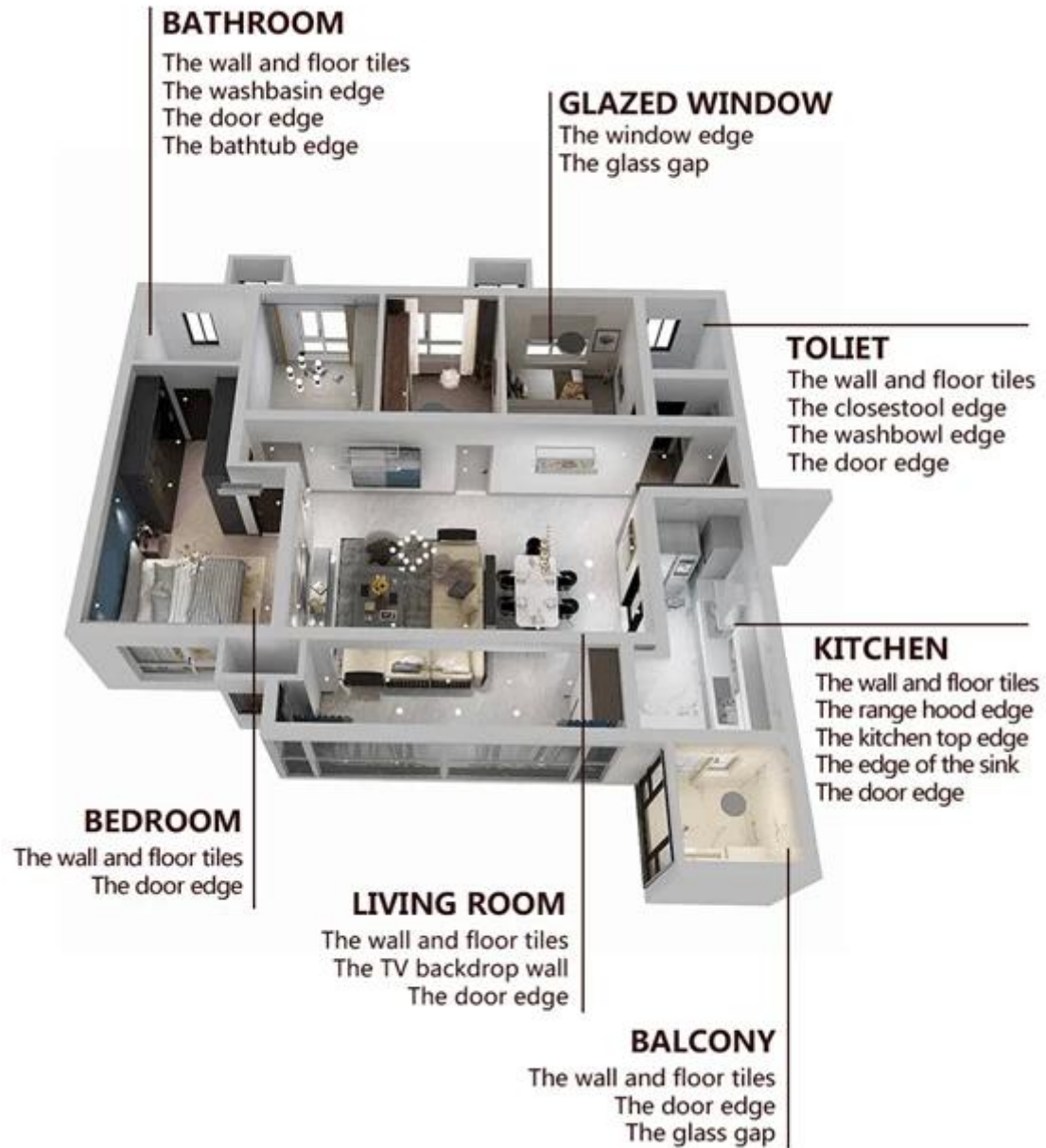
[China grout sealant manufacturer](#) to provide you with quality products.



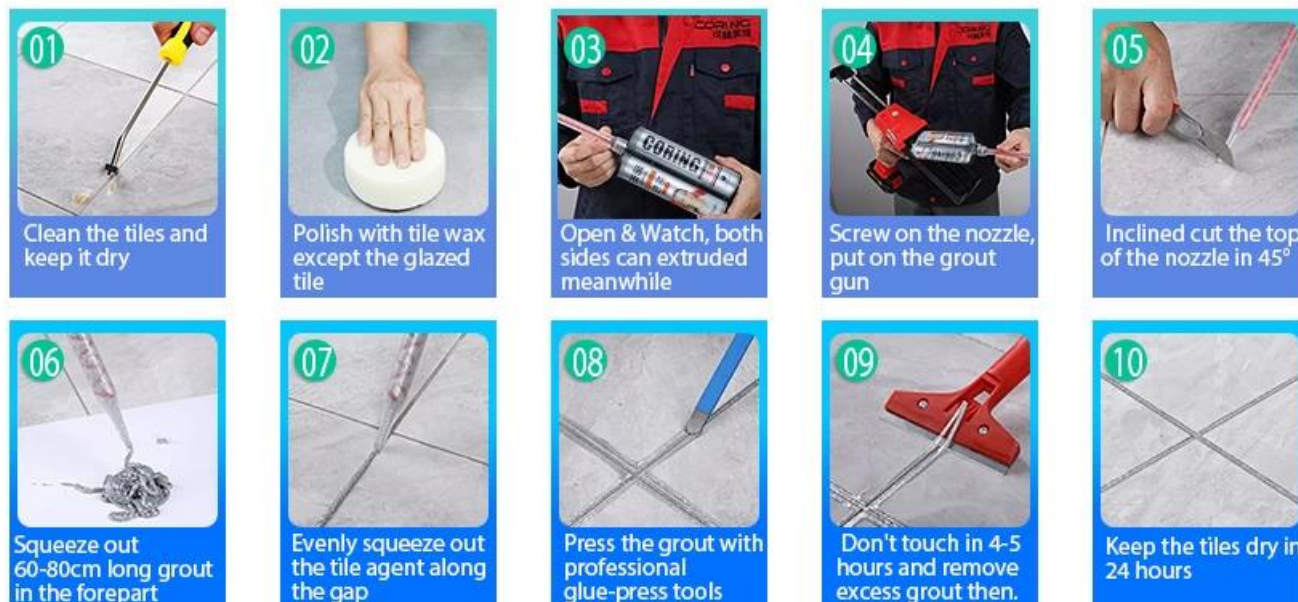
Varieties of colors for your choice. Also provide custom colors.



Provide Whole Room Gap Solution



Brief Construction Process



Professional Joint-Pressing Tool



Company Advantage



Factory Overview



Creaming Machine Line



Testing Machine



Batching Production Line



Cooling Filling



Filling Machine Line



Film-coated Machine



Real Material Stock



Stock

Certification

