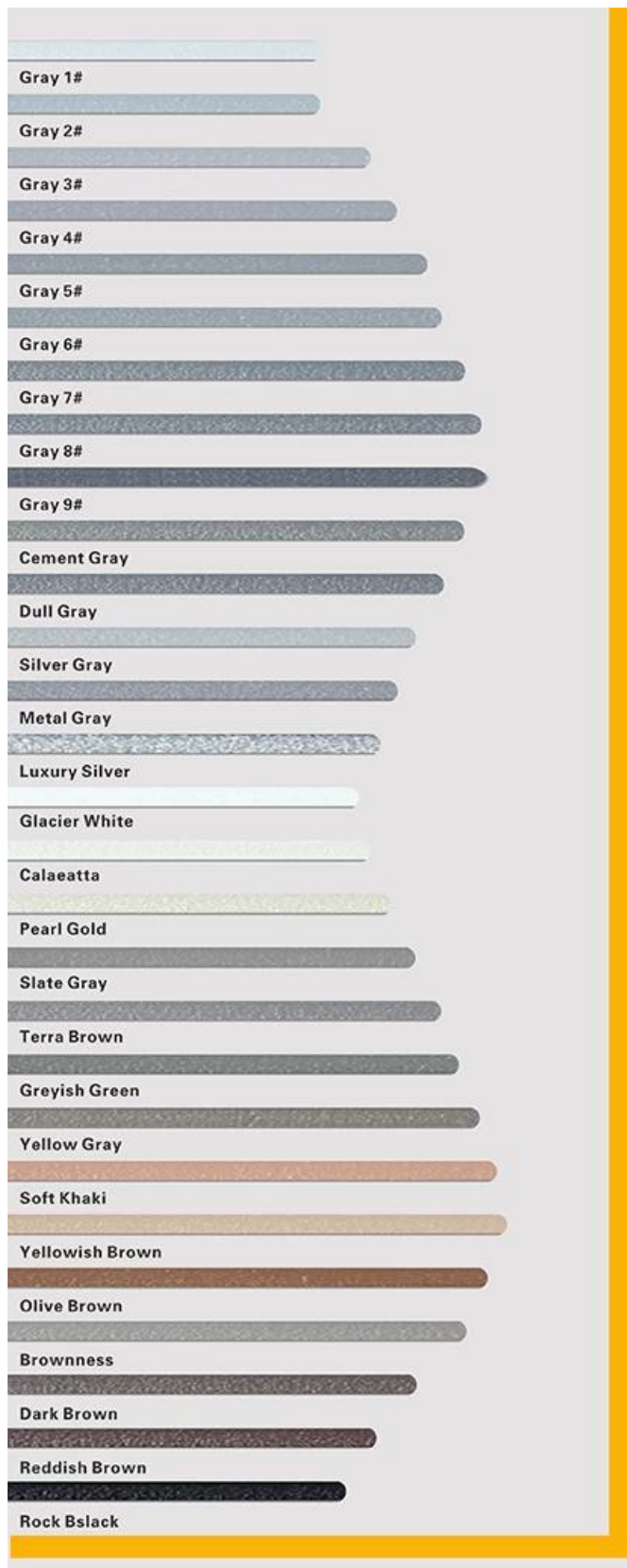


Kelin polyurea tile grout is a new overturning product. Due to POLYUREA's excellent wear-resistance, corrosion-resistance, yellow-resistance, high temperature resistance and other superior performance, it is widely used in the military industry, aerospace and vessels industry. In addition, it solidifies quickly, construction and clean edge in the same day, save time and labor costs. More importantly, it can be constructed in wet subbase surface, which greatly solves the problem that cannot construct because of climate and other reasons. Australia joint research and development products to make the better performance, and through the Chinese Academy of Sciences strategic quality control guidance, to make products' quality stable.

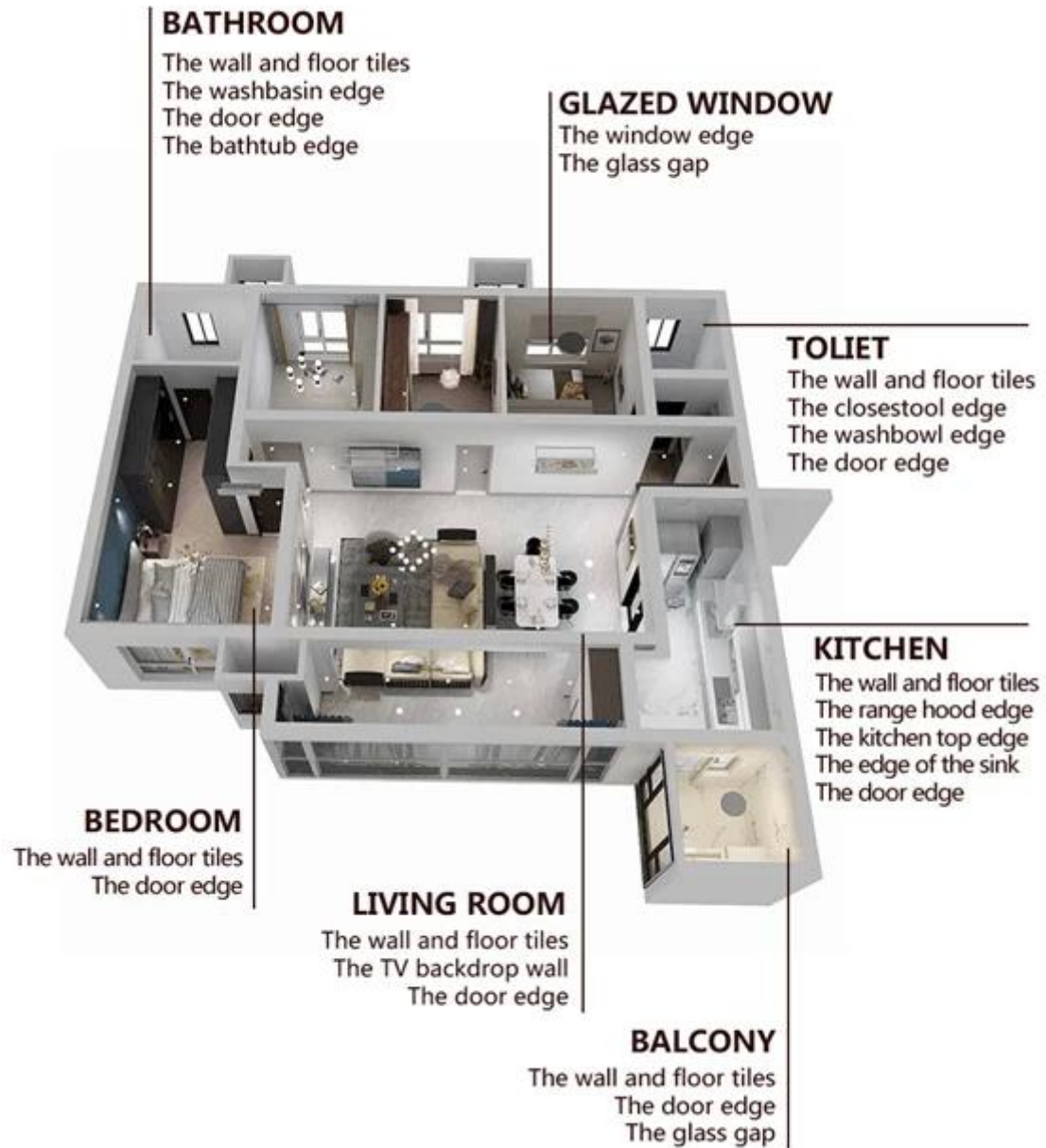
The product of [China tile joint sealant manufacturer](#) can be better used in the joints of ceramic tile, stone, glass, mosaic tile on the wall or flour in bathroom, kitchen, bedroom and so on. China Kelin [tile adhesive wholesaler](#) has been in this field for 14 years. We have our own R&D team and factory. Because material environmental protection is easy construction, get broad consumer favor. So Kelin [grout sealant supplier](#) will provide you with quality products. Welcome to contact [China beauty seam agent factory](#) when you need.



**Varieties of colors for your choice. Also provide custom colors.**

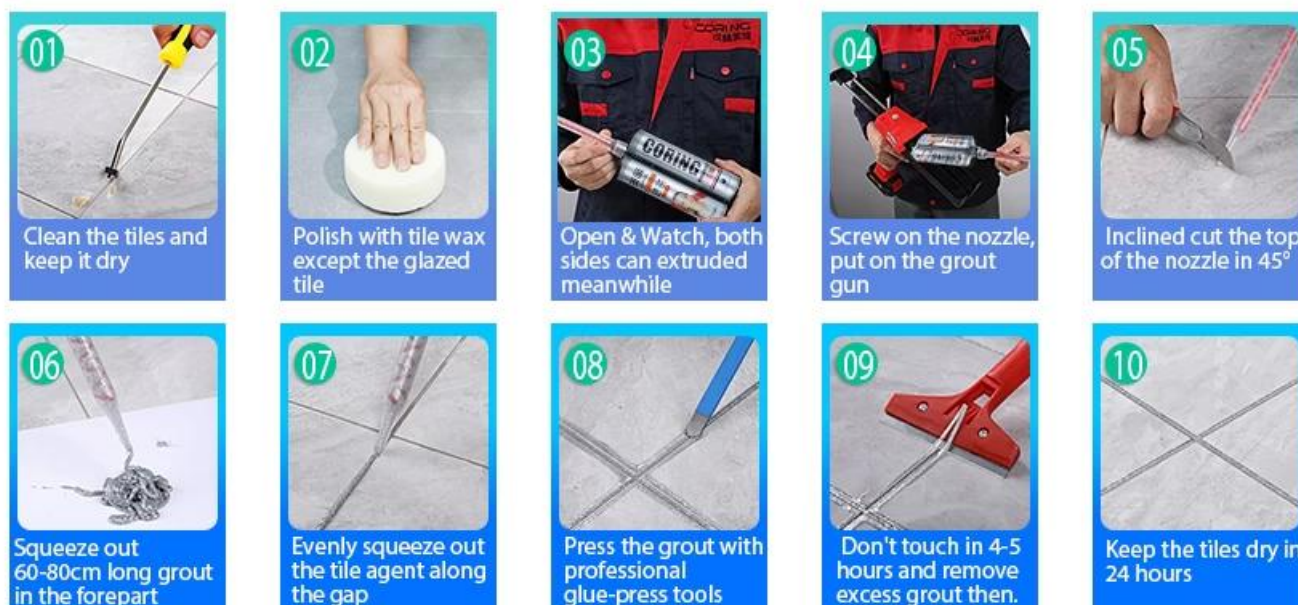


**Provide Whole Room Gap Solution**



## Brief Construction Process

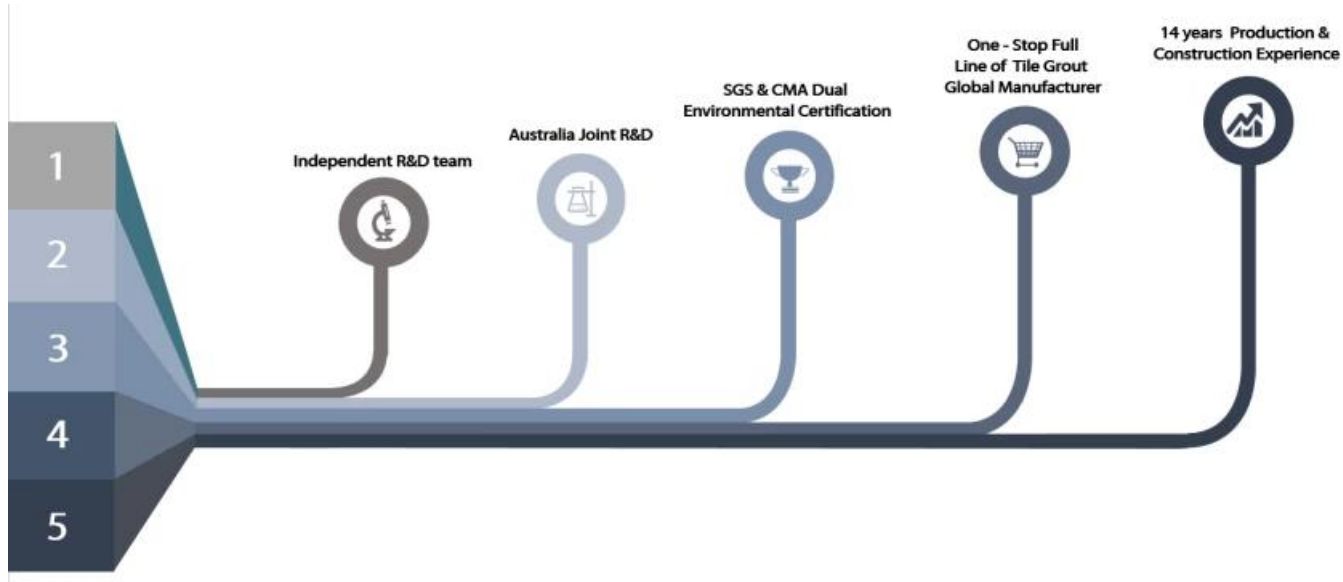




## Professional Joint-Pressing Tool



## Company Advantage



## Factory Overview



Creaming Machine Line



Testing Machine



Batching Production Line



Cooling Filling



Filling Machine Line



Film-coated Machine



Real Material Stock



Stock

## Certification

