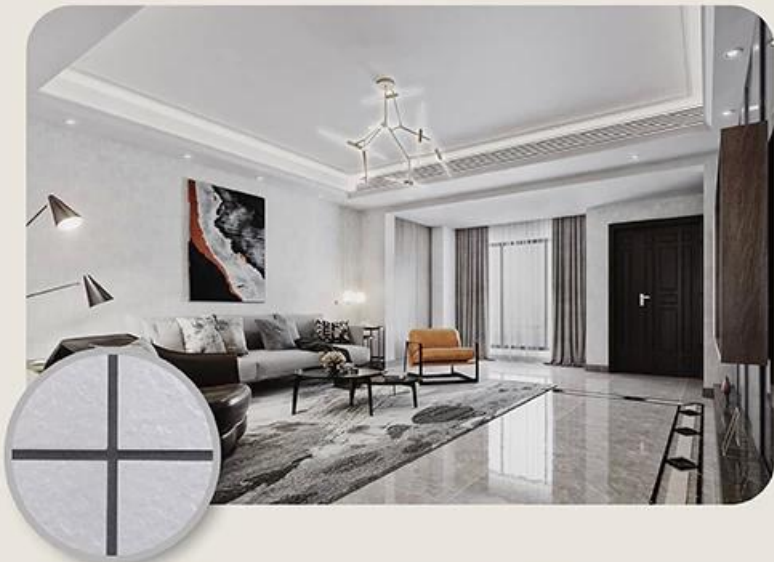


Kelin waterborne epoxy adhesive is a high-end environmental product. Matte texture, provides you a low-key luxury decorative style, and the joint surface looks perfect fit to the ceramic tile. Varieties of colors, let your decoration place sparkling. The subbase course of waterborne epoxy resin makes the product absolutely environmental. Natural sand calcined at high temperature makes the color more natural and beautiful and never fades. The product can be better used in the joints of ceramic tile, stone, glass, mosaic tile on the wall or flour in bathroom, kitchen, bedroom and so on. It is a preference product in family decoration, adding negative oxygen ion to purify air. Australia joint research and development products to make the better performance, and through the Chinese Academy of Sciences strategic quality control guidance, to make products' quality stable. Welcome to contact us-Kelin [China ceramic tile grout supplier](#) learn more about tile grout.



**Varieties of colors for your choice. Also provide custom colors.**

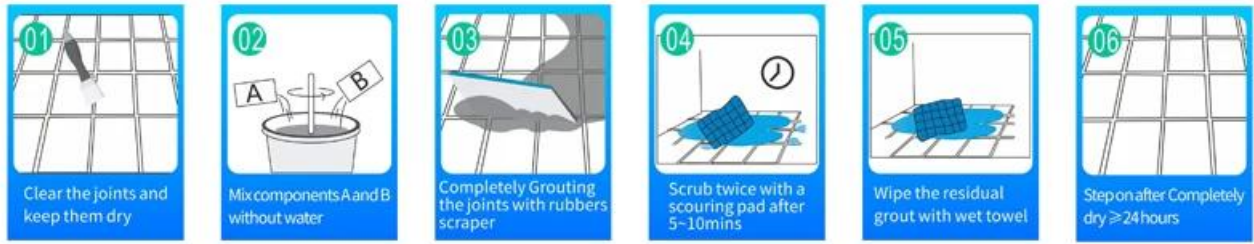
- Off White
- Gainsboro
- Grayish
- Medium Gray
- Dull Gray
- Silver Gray
- Metal Gray
- Starry Gray
- Luxury Gray
- Slate Gray
- Greyish Green
- Yellow Gray
- Brownness
- Terra Brown
- Glacier White
- Calaeatta
- Pearl Gold
- Primrose Yellow
- Shiny Gold
- Buff Beige
- Grayish Yellow
- Yellowish Brown
- Soft Khaki
- Olive Brown
- Brown
- Reddish Brown
- Dark Brown
- Rock Black



**Provide Whole Room Gap Solution**



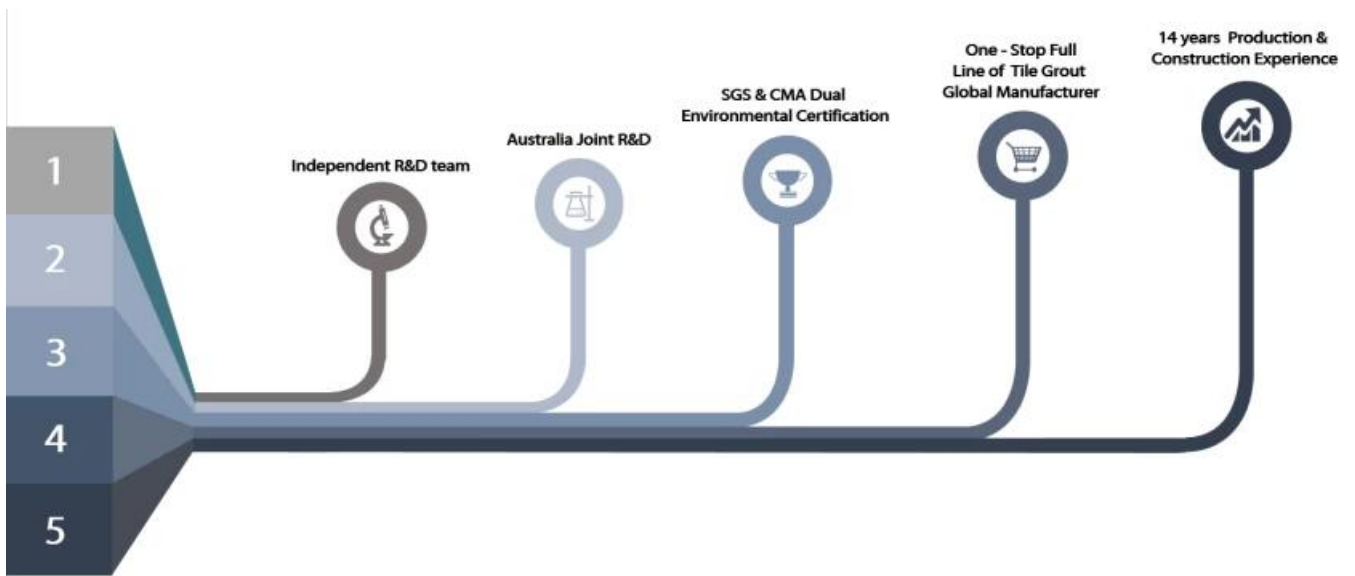
**Brief Construction Process**



### Professional Joint-Pressing Tool



### Company Advantage



## Factory Overview



Creaming Machine Line



Testing Machine



Batching Production Line



Cooling Filling



Filling Machine Line



Film-coated Machine



Real Material Stock



Stock

## Certification

