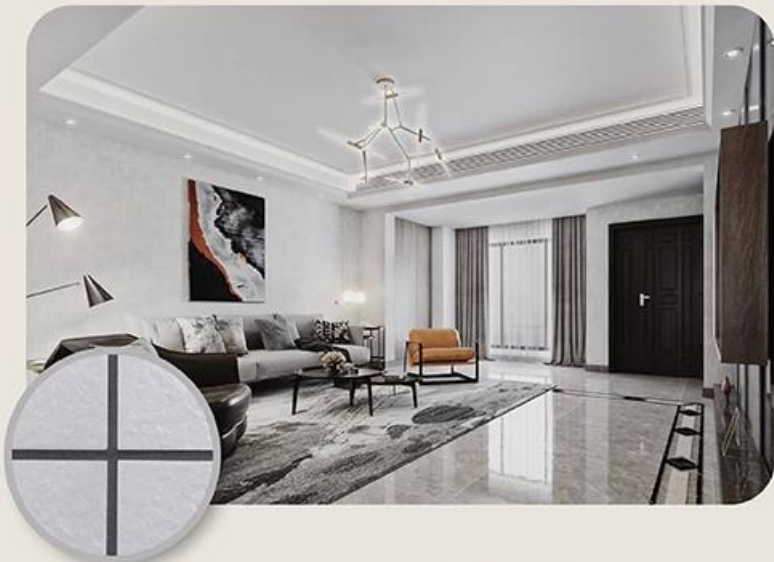


We are a [China waterbom epoxy adhesive manufacturer](#), our waterborne epoxy adhesive is a high-end environmental product. Matte texture, provides you a low-key luxury decorative style, and the joint surface looks perfect fit to the ceramic tile. Varieties of colors, let your decoration place sparkling. The subbase course of waterborne epoxy resin makes the product absolutely environmental. Natural sand calcined at high temperature makes the color more natural and beautiful and never fades. The product can be better used in the joints of ceramic tile, stone, glass, mosaic tile on the wall or flour in bathroom, kitchen, bedroom and so on. It is a preference product in family decoration, adding negative oxygen ion to purify air. Australia joint research and development products to make the better performance, and through the Chinese Academy of Sciences strategic quality control guidance, to make products' quality stable.



Varieties of colors for your choice. Also provide custom colors.

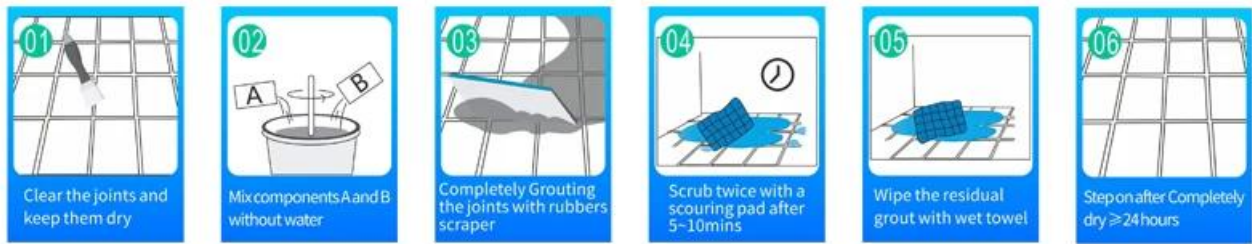
- Off White
- Gainsboro
- Grayish
- Medium Gray
- Dull Gray
- Silver Gray
- Metal Gray
- Starry Gray
- Luxury Gray
- Slate Gray
- Greyish Green
- Yellow Gray
- Brownness
- Terra Brown
- Glacier White
- Calaeatta
- Pearl Gold
- Primrose Yellow
- Shiny Gold
- Buff Beige
- Grayish Yellow
- Yellowish Brown
- Soft Khaki
- Olive Brown
- Brown
- Reddish Brown
- Dark Brown
- Rock Black



Provide Whole Room Gap Solution



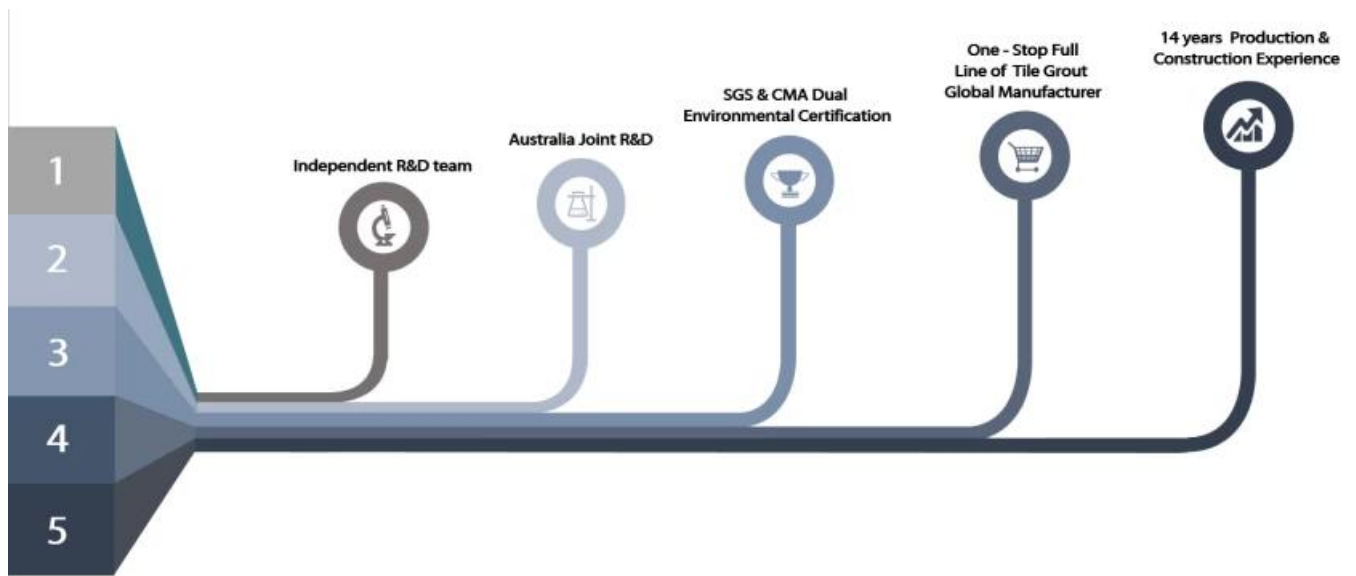
Brief Construction Process



Professional Joint-Pressing Tool



Company Advantage



Factory Overview



Creaming Machine Line



Testing Machine



Batching Production Line



Cooling Filling



Filling Machine Line



Film-coated Machine



Real Material Stock



Stock

Certification

