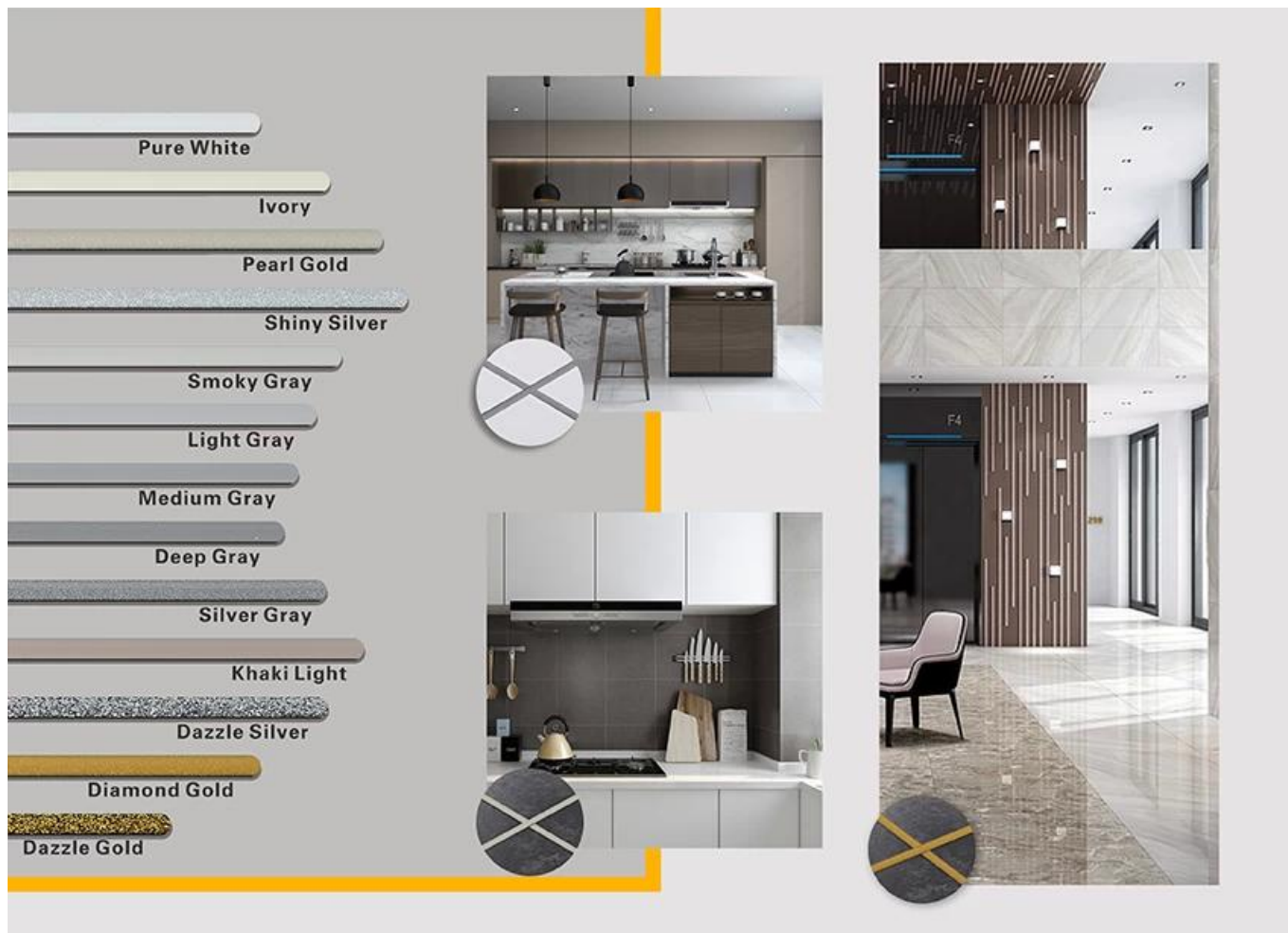


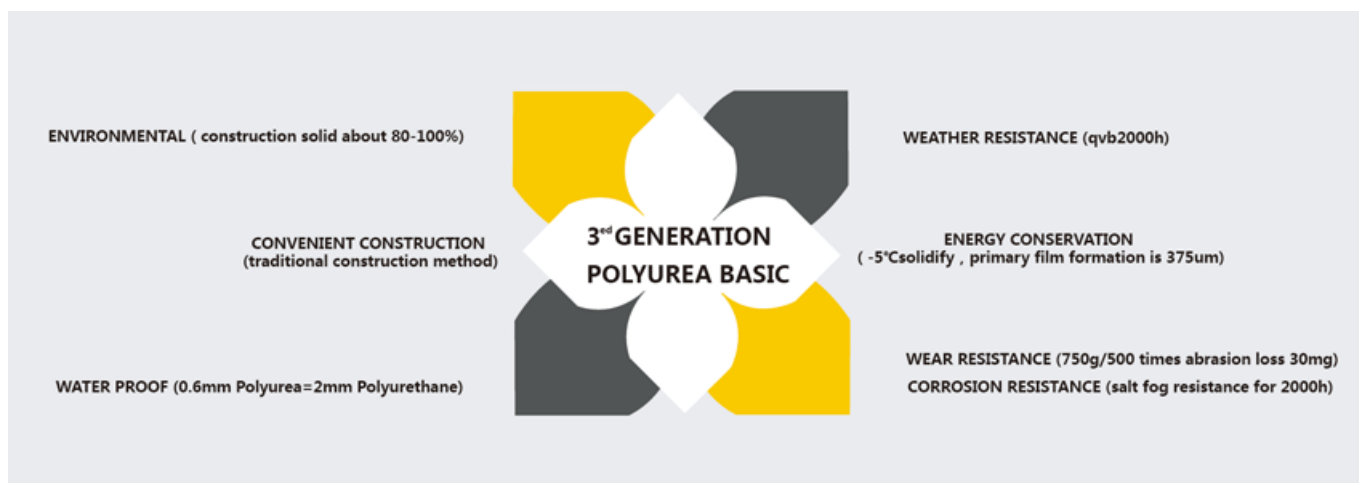
Kelin polyurea tile grout is a new overturning product. Due to POLYUREA's excellent wear-resistance, corrosion-resistance, yellow-resistance, high temperature resistance and other superior performance, it is widely used in the military industry, aerospace and vessels industry. We are a [China polyurea tile grout manufacturer](#). Our product is totally polyure basic product, can be better used in the joints of ceramic tile, stone, glass, mosaic tile on the wall or flour indoor & outdoor. It has its own special characteristics: permanent moisture proof, more environmental, curing fast, save labor and never discolor, which is its biggest advantage. In addition, it solidifies quickly, construction and clean edge in the same day, save time and labor costs. More importantly, it can be constructed in wet subbase surface, which greatly solves the problem that cannot construct because of climate and other reasons. Australia joint research and development products to make the better performance, and through the Chinese Academy of Sciences strategic quality control guidance, to make products' quality stable.



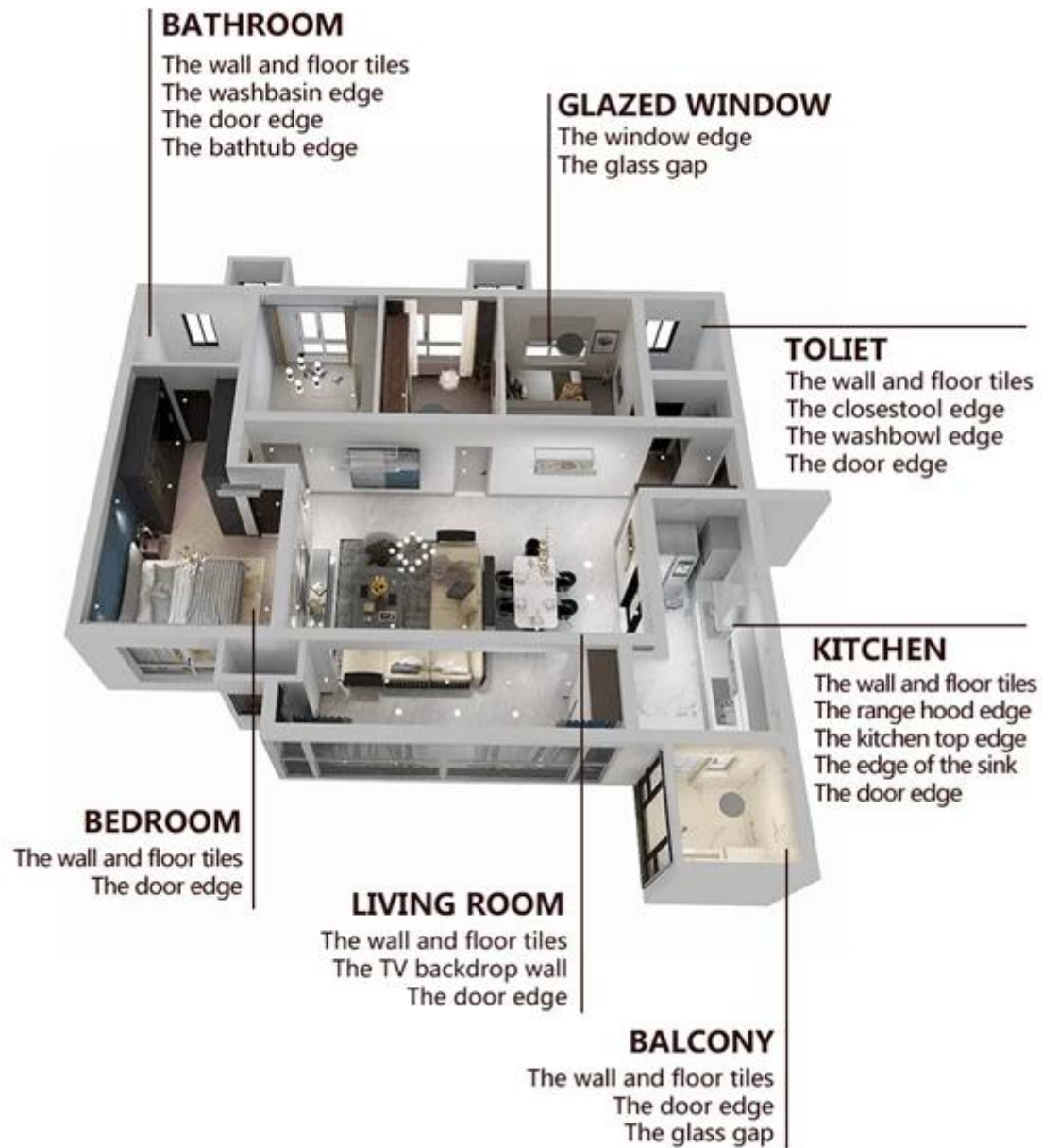
Varieties of colors for your choice. Also provide custom colors.



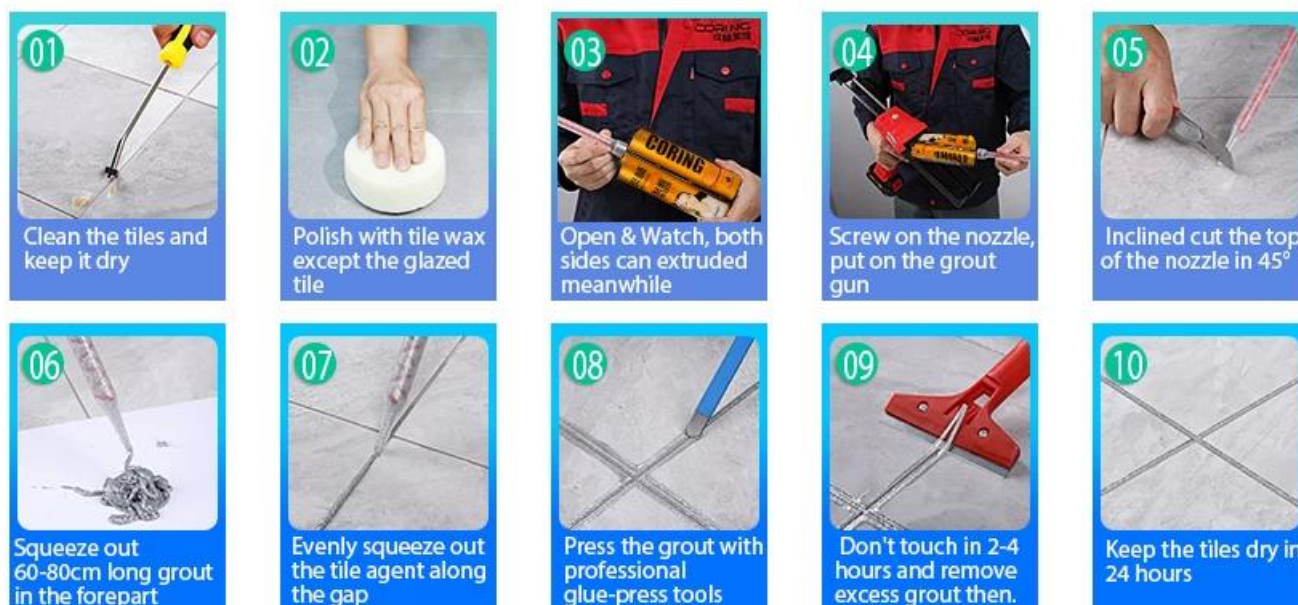
Polyurea Basic Tile Grout Feature



Provide Whole Room Gap Solution



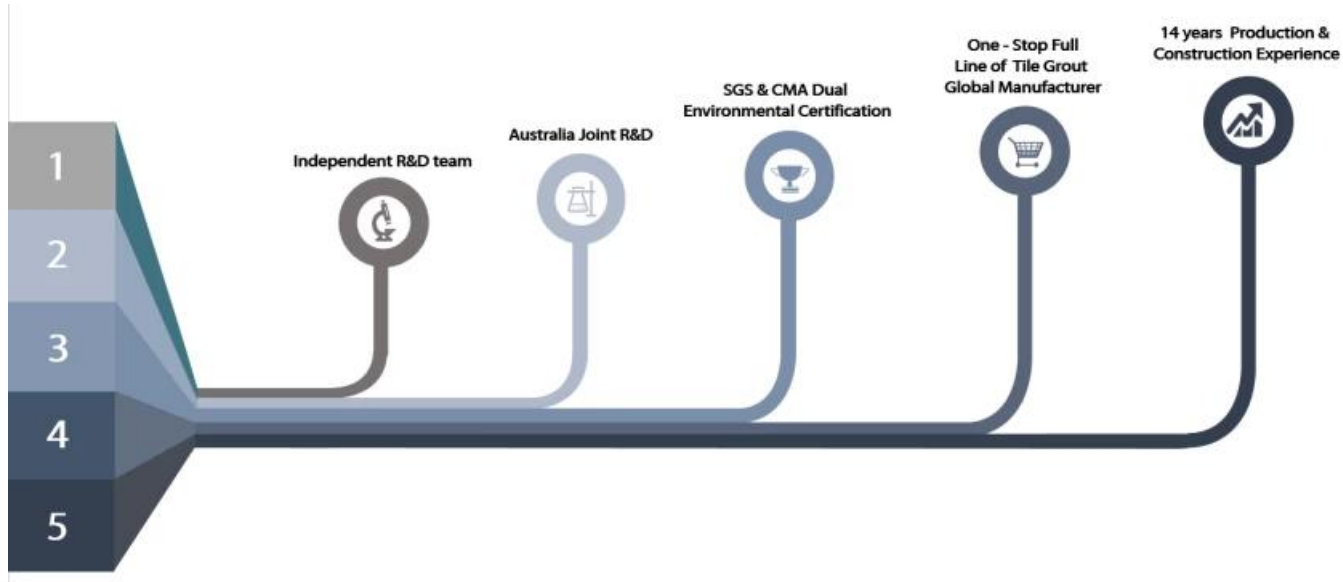
Brief Construction Process



Professional Joint-Pressing Tools



Company Advantage



Factory Overview



Creaming Machine Line



Testing Machine



Batching Production Line



Cooling Filling



Filling Machine Line



Film-coated Machine



Real Material Stock



Stock

Certification

