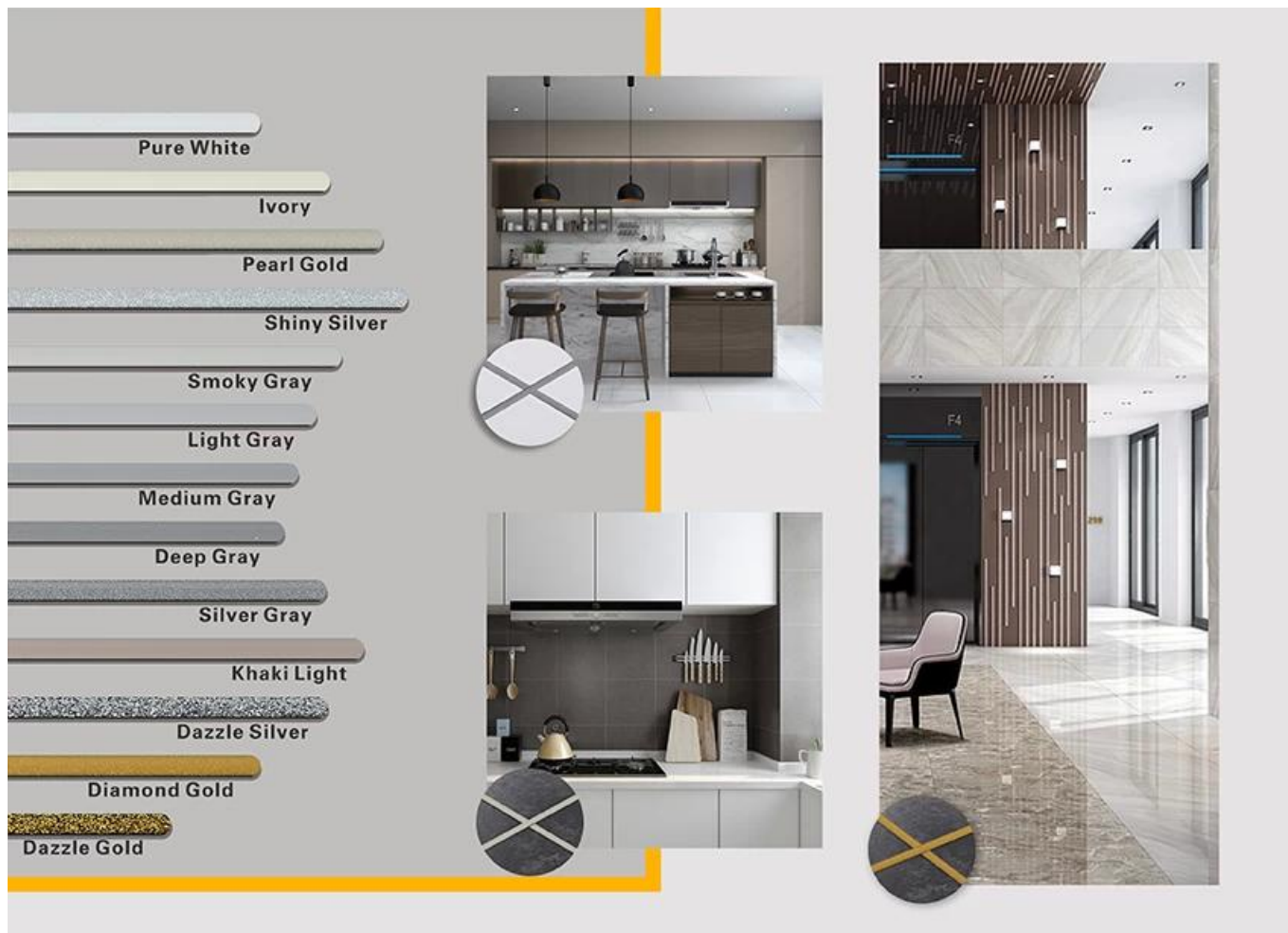


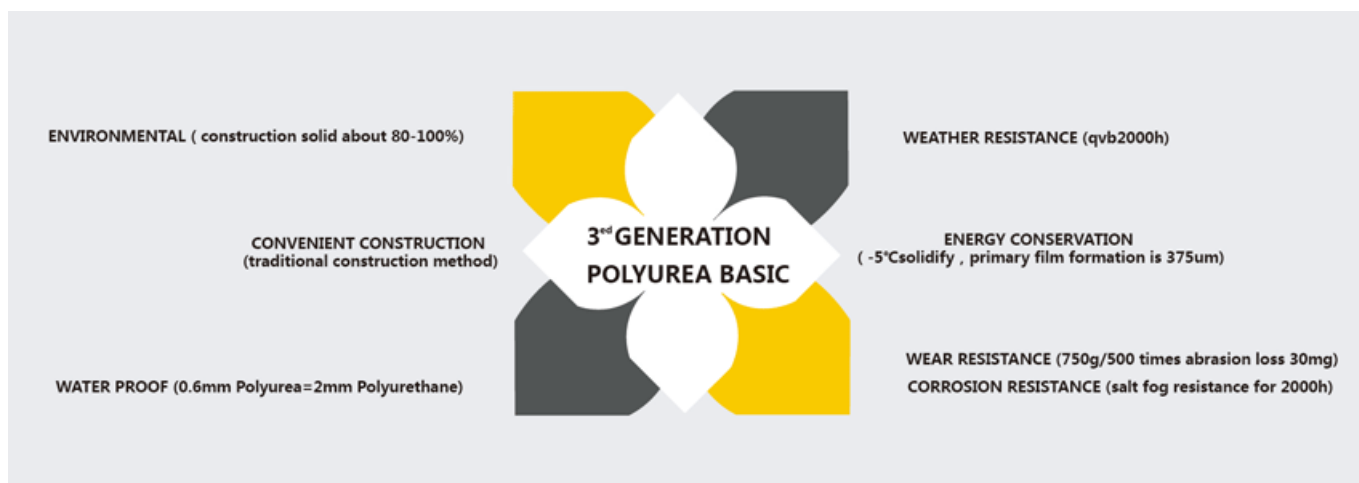
Kelin polyurea tile grout is a new overturning product. Due to POLYUREA's excellent wear-resistance, corrosion-resistance, yellow-resistance, high temperature resistance and other superior performance, it is widely used in the military industry, aerospace and vessels industry. Our product is totally polyure basic product, can be better used in the joints of ceramic tile, stone, glass, mosaic tile on the wall or flour indoor & outdoor. It has its own special characteristics: permanent moisture proof, more environmental, curing fast, save labor and never discolor, which is its biggest advantage. The product has strong stability and can be used both indoors and outdoors. Contact us-Kelin [China polyurea tile grout manufacturer](#) for more information.



Varieties of colors for your choice. Also provide custom colors.



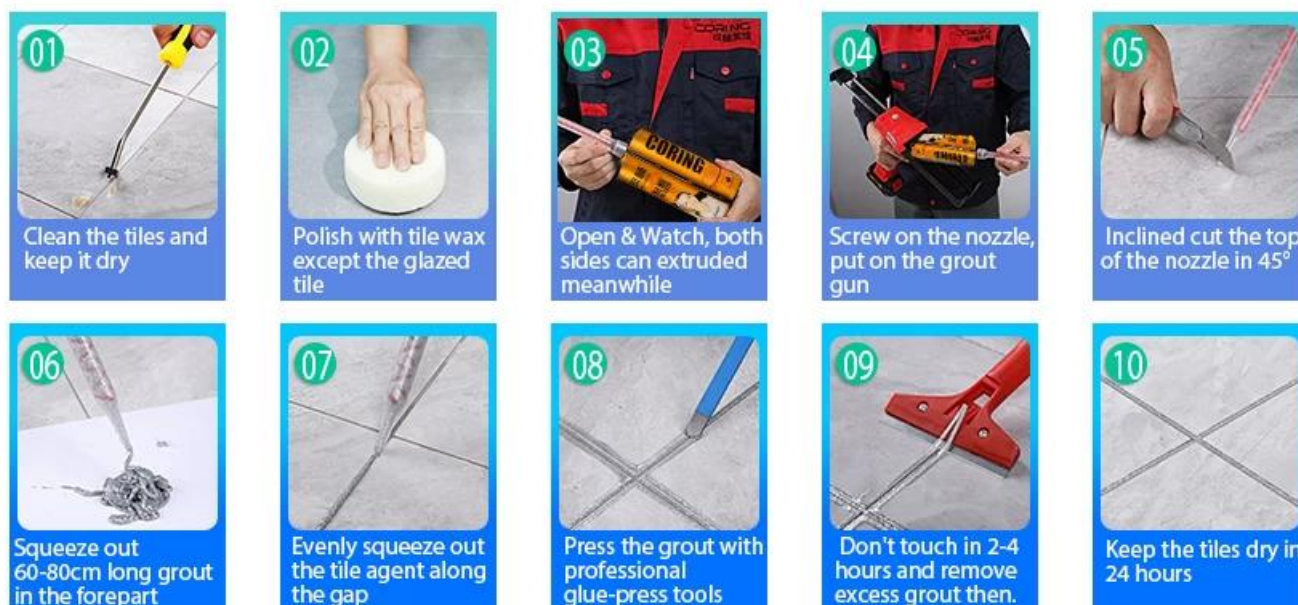
Polyurea Basic Tile Grout Feature



Provide Whole Room Gap Solution



Brief Construction Process



Professional Joint-Pressing Tools



Company Advantage



Factory Overview



Creaming Machine Line



Testing Machine



Batching Production Line



Cooling Filling



Filling Machine Line



Film-coated Machine



Real Material Stock



Stock

Certification

